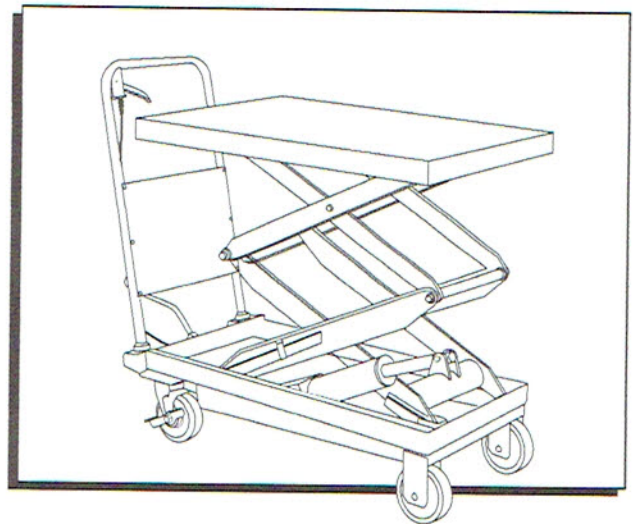


**ULINE H-1784**  
**DOUBLE SCISSOR**  
**LIFT TABLE**

1-800-295-5510  
uline.com



**TECHNICAL INFORMATION**

| SPECIFICATIONS                   | H-1784       |
|----------------------------------|--------------|
| Capacity                         | 770 lbs.     |
| Max. Lift Height                 | 51"          |
| Min. Height of Table             | 13.8"        |
| Lifting Height                   | 37.2"        |
| Table Size                       | 36 x 20 x 2" |
| Total Height                     | 30.3"        |
| Overall Length                   | 42"          |
| Foot Pedal Cycles to Max. Height | 46           |
| Wheel Diameter                   | 5"           |
| Weight                           | 223 lbs.     |
| Working Volume of Oil Cylinder   | 310 ml       |
| Oil Capacity                     | 400 ml       |

**GENERAL INFORMATION**

1. Read all instructions carefully before operating the lift table.
2. DO NOT overload the lift table and always operate it within the rated load. Overloading will cause damage to the lift table and the operator.
3. DO NOT stand or sit on the table to work.
4. DO NOT put hands or feet under the table when lowering.
5. Apply the brakes while loading to prevent the table from moving.
6. The load must be distributed uniformly across the whole table.
7. DO NOT load loose or unstable loads onto the table.
8. DO NOT leave the table loaded for extended periods of time.
9. DO NOT move the truck while lifting.
10. The table should only be used on flat solid surfaces.
11. Make sure not to overload the table when it is in the raised position. The safety valve only works as the table is lifted. Overloading in the raised position may damage the table.
12. When loading and unloading goods in the raised position, do not drag loads across the table. This may cause offset loading and the table may turn over.
13. When maintaining and repairing the table, the stand bar should be used to support the fork arm in order to prevent table from falling. There should not be a load on table while maintaining and repairing the table.

## ASSEMBLY

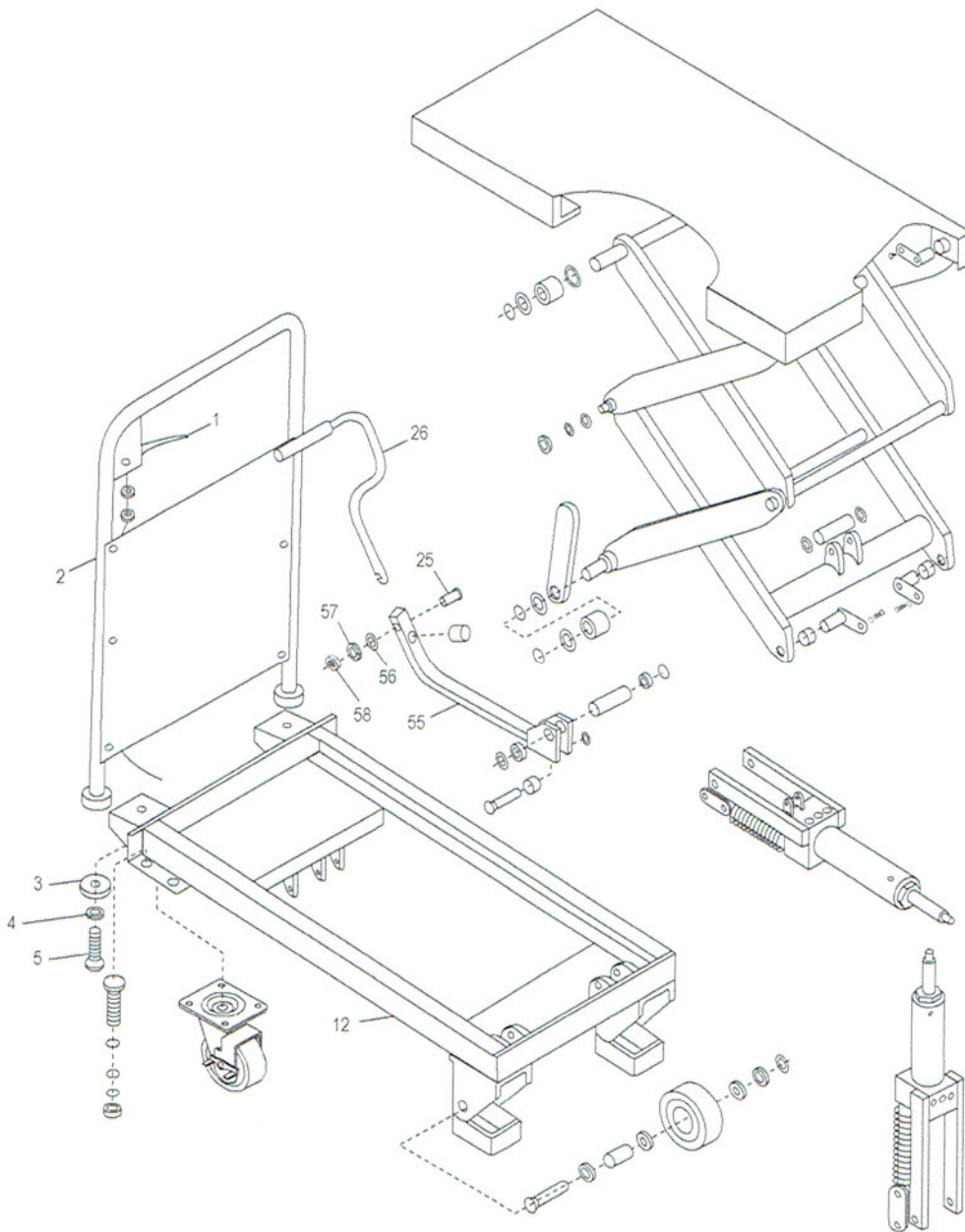
The handle and foot lever of H-1784 type lift table are dismantled when shipped. They must be attached to lift table before operating.

### HANDLE INSTALLATION

Fix the handle (2) to table body (12) with flat washer (3), lock washer (4), and bolt (5). Then tighten the bolt (5) with a wrench.

### FOOT LEVER INSTALLATION

Insert the foot pedal (26) into the hole of the square bar (55). Fix the foot pedal with a bolt (25), plain washer (56) a lock washer (57), and a nut (58). Tighten the nut (58) with a wrench.





## MAINTENANCE

It is very important to conduct necessary maintenance and upkeep so as to prolong the service life and safety of the lift table. Please check the lift table before operation accordingly:

1. Check for any distortion or bending of any parts of the lift table.
2. Check the brake of the truck and the condition of the wheels.
3. Check for oil leakage in the hydraulic system.
4. Add or fill lubricant to each friction surface before daily operation.
5. If there is any failure, the lift table should be repaired at once before it can be put into use again.
6. Change the hydraulic oil every twelve months, choose appropriate hydraulic oil according to the climate conditions.
7. To change the hydraulic oil:
  - a. Unscrew sealing screw with a wrench.
  - b. Lift the hand lever (2).
  - c. Twist off screw of the oil plug and fill pump with hydraulic oil.

## TROUBLESHOOTING

| OPERATING ISSUE                      | CAUSES  | RECOMMENDATIONS   |
|--------------------------------------|---|---|
| Does not reach the full lift height. | 1) Steel ball of the check-valve is not fully seating.<br>2) Firing pin does not allow the steel ball to fully seat.<br>3) Low hydraulic oil. | 1) Clean the valve opening and replace the steel ball.<br>2) Adjust the tension rate of the steel wire connecting to the hand lever to adjust the seating of the firing pin.<br>3) Add hydraulic oil. |
| The table rises then descends.       | 1) Steel ball of the check-valve is not fully seating.<br>2) Firing pin does not allow the steel ball to fully seat.                          | 1) Clean the valve opening and change the steel ball.<br>2) Adjust the tension rate of the steel wire connecting to the hand lever to adjust the seating of firing pin.                               |
| The table does not descend.          | The travel of the firing pin is not enough to open the steel ball.  | Adjust the tension rate of the steel wire rope to make firing pin at suitable place and apply lubricant to the pin.   |
| Oil leakage at firing pin.           | The O-ring is damaged.  | Change the O-ring.  |
| Oil leakage at pump.                 | The seal ring is damaged.   | Change the seal ring.   |
| Table will not rise.                 | Cable may be disconnected.  | Ensure cable with silver sleeve is terminating inside of nut.   |